



Copper Mountain Mining Corporation

Suite 1700, 700 West Pender Street

Vancouver, BC V6C 1G8

Telephone: (604) 682-2992

Facsimile: (604) 682-2993

Web Site: www.CuMtn.com

TSX: CUM

MECHANICAL COMPLETION OF NEW SECONDARY CRUSHER ACHIEVED ON TIME AND ON BUDGET AT COPPER MOUNTAIN

Vancouver, British Columbia – August 7, 2014 – Copper Mountain Mining Corporation (TSX: CUM) (the “Company” or “Copper Mountain”) announces that construction of the new permanent secondary crusher at the Copper Mountain mine located in southern British Columbia is now complete and the crusher is being commissioned (see photos next page). The project was completed on schedule and at the \$40 million budget. The secondary crusher was tested with ore at the beginning of this week and since then the commissioning of the crusher is progressing smoothly.

The tie in of the new secondary crusher into the existing one kilometer overland conveyor that transfers ore from the primary crusher to the new secondary crusher and mill feed stockpile was successfully completed without any operational interruptions to the SAG mill. With the new secondary crusher in operation, 100% of the ore feed going into the SAG mill is minus 2 inches in size. Operations are steadily improving as the live crushed ore stockpile transitions from minus 5.5 inches to the new reduced ore feed size of minus 2 inches. With the new secondary crusher now in operation, the Company intends to dismantle the temporary portable crushing units that were put in place over the past twelve months; this change will reduce operating costs at the site.

Mr. O’Rourke, President and CEO commented: “We are extremely pleased with everyone’s efforts that have allowed us to bring the addition of this new secondary crusher into operation within our timeframe and budget. Our team has successfully met and overcome all the challenges to complete the project in the seven month construction schedule. The benefits to the mine will be immediate. By reducing the size of the SAG Mill feed down to minus 2 inches we are confident that the mine will achieve our production expectations.”

About Copper Mountain Mining Corporation:

Copper Mountain’s flagship asset is the Copper Mountain mine located in southern British Columbia near the town of Princeton. The Company has a strategic alliance with Mitsubishi Materials Corporation who owns 25% of the mine. The Copper Mountain mine commenced production in the summer of 2011 and has continued to improve its operations since startup. The 18,000 acre site has a large resource of copper that remains open laterally and at depth. The mine has significant exploration potential that will need to be explored over the next few years to fully appreciate the properties full development potential. Additional information is available on the Company’s web site at www.CuMtn.com.

On behalf of the Board of

COPPER MOUNTAIN MINING CORPORATION

“Jim O’Rourke”

Jim O’Rourke, P.Eng.
Chief Executive Officer

For further information, please contact:

Galina Meleger, Corporate Communications 604-682-2992 ext.224 Email: Galina@CuMtn.com or

Rod Shier, Chief Financial Officer 604-682-2992 ext.222 Email: Rod@CuMtn.com

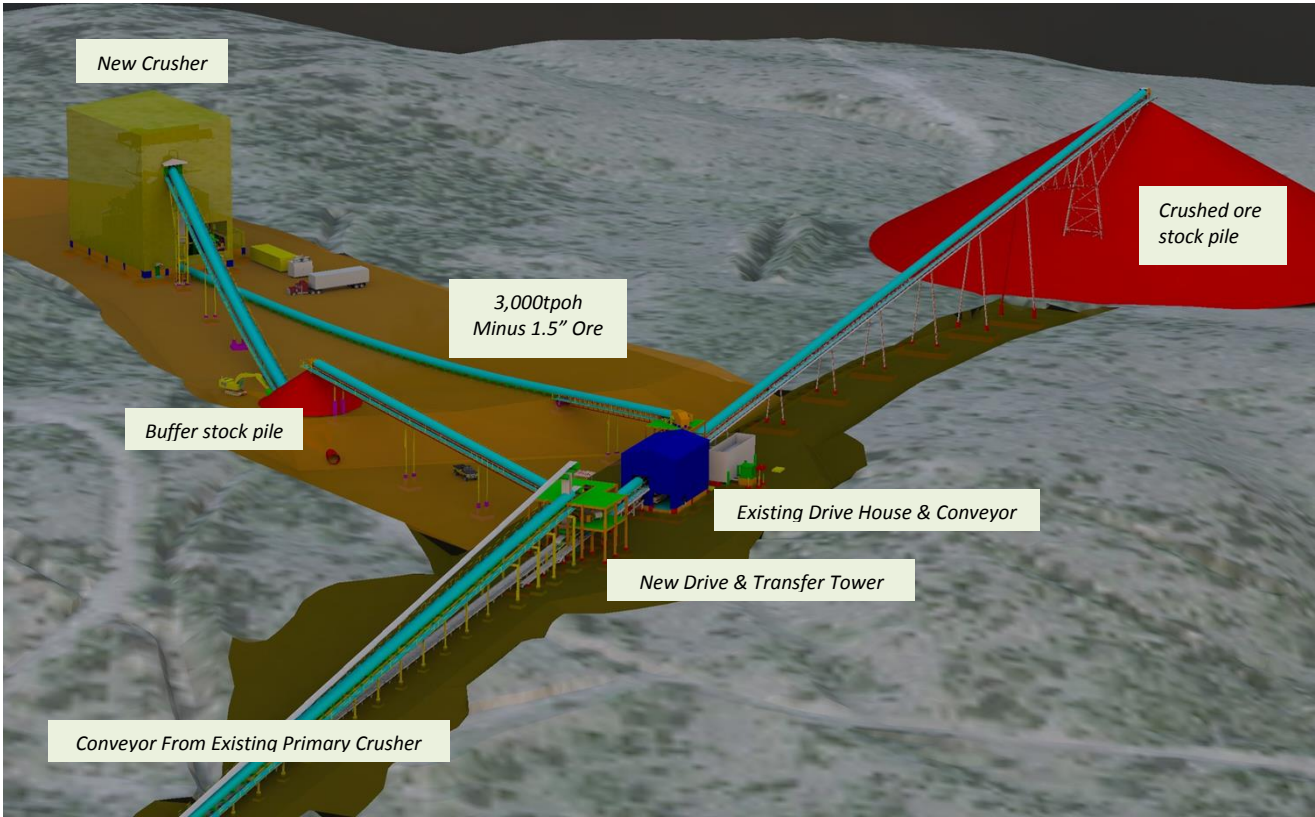
Website: www.CuMtn.com

Note: This release contains forward-looking statements that involve risks and uncertainties. These statements may differ materially from actual future events or results. Readers are referred to the documents, filed by the Company on SEDAR at www.sedar.com, specifically the most recent reports which identify important risk factors that could cause actual results to differ from those contained in the forward-looking statements. The Company undertakes no obligation to review or confirm analysts’ expectations or estimates or to release publicly any revisions to any forward-looking statement

COPPER MOUNTAIN UPDATES CONSTRUCTION PROGRESS ON SECONDARY CRUSHER



Aerial View of Completed Secondary Crusher Installation



Schematic of secondary crusher addition

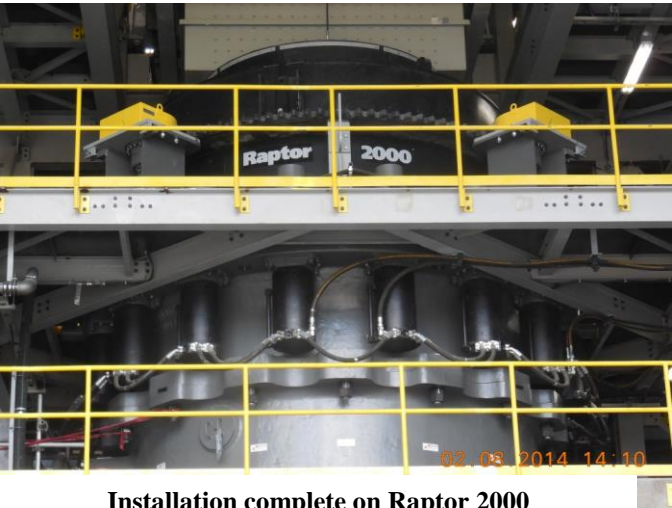
COPPER MOUNTAIN UPDATES CONSTRUCTION PROGRESS ON SECONDARY CRUSHER



Installation of dust collector



Installation of cooling fans



Installation complete on Raptor 2000



View from Secondary Crusher Building



First ore coming off S2 Conveyor - Aug 3-2014



Secondary crusher in operation - Aug 6-2014